

Proud to help make our region a vibrant place to live through support of the **performing arts.**



MOSCOW • POTLATCH • KENDRICK • TROY • VANDAL HEALTH



# AMÉLIE (THE MUSICAL)

MUSIC BY DANIEL MESSE

LYRICS BY DANIEL MESSE AND NATHAN TYSEN

BOOK BY CRAIG LUCAS

BASED ON THE MOTION PICTURE AMÉLIE WRITTEN BY JEAN-PIERRE JEUNET AND GUILLAUME LAURANT

DIRECTED BY CRAIG A. MILLER

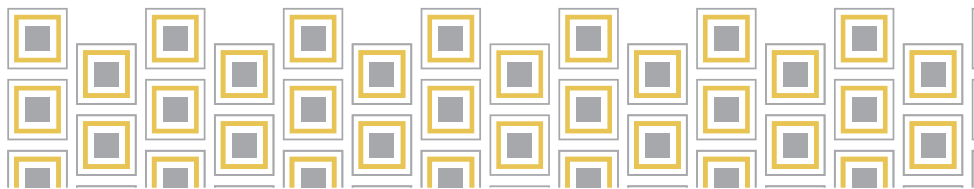
MUSIC DIRECTOR CHRISTIAN REED | ORCHESTRA CONDUCTOR VERN SIELERT

OCT. 26-NOV. 5, 2023

FAGERBARKE STAGE | HARTUNG THEATER | MOSCOW, IDAHO



PRESENTED BY  
DEPARTMENT OF THEATRE ARTS  
LIONEL HAMPTON SCHOOL OF MUSIC





# A Message from the Director



*"How do we change the world? One random act of kindness at a time."*

- Morgan Freeman

EVERY MOMENT OF OUR LIFE provides infinite potential for change. It is upon the fulcrum of these moments that we are presented with the opportunity to alter our course with an act of kindness and perhaps transform our existence and possibly another's; what happens when we do? What happens if we

illuminate this possibility for others? Amélie is a musical that posits and buoys the notion of radical empathy and demonstrates the power of rampant, unchecked kindness; that kindness bestowed upon our friends, family, even complete strangers, for no other reason than to improve their existence. This can change the world. For all of us – artists and audience alike – this beautiful story reminds and reawakens in us the belief that the kind actions of one person are indeed capable of making a difference: for an individual, an entire group, a community, and our civilization. When Amélie tries it, the results are profound, bringing positive change and a renewed faith in humanity to her "kindness beneficiaries", and...most importantly, experiencing the results of her kindness just might inspire us to give it a try.

Thank you for being here tonight to support the collaboration of live theatre, music, and dance! Please consider making a gift of support to ensure future collaborations between UI Theatre Arts, the School of Music, and the Dance Program as we continue to explore and present high-quality Musical Theatre opportunities for our students and the community!

Enjoy the show,  
Craig A. Miller



**Special Thanks:**

VIP Production Northwest  
Adrian Crookston, Accordion Coach

Amélie is presented by Arrangement with Concord Theatricals.  
[www.concordtheatricals.com](http://www.concordtheatricals.com)

World Premiere produced in September 2015 by Berkeley Repertory Theatre, Tony Taccone, Artistic Director Susan Medak, Managing Director. Presented in December 2016 by Center Theatre Group Michael Ritchie, Artistic Director, Stephen D. Rountree, Managing Director, Douglas C. Baker, Producing Director. The Broadway producer credits are as follows: Aaron Harnick, David Broser, Triptyk Studios, Spencer B. Ross, Harbor Entertainment, Berkeley Repertory Theatre, Center Theatre Group, Simone Genatt Haft, Marc Routh, Saltaire Investment Group, The John Gore Organization, David Mirvish, Terry Schnuck and Jujamcyn Theaters.

## Auditorium Chamber Music Series

2023-2024 Season

UNIVERSITY OF IDAHO



### MUSIC FROM THE PALOUSE | October 19, 2023

Leonard Garrison, *flute* / Shannon Scott, *clarinet* / Martin King, *horn* / Chris Dickey, *tuba* / Navin Chettri, *tabla* / Roger McVey, *piano* / Yuna Roh, *piano* / Eneida Larti, *piano* / Giselle Hillyer, *violin* / Inga Kingsley, *violin* / Christiano Rodriguez, *viola* / Miranda Wilson, *cello* / Cole Tutino, *cello*  
Music from the Palouse features some of our region's best musical talent, collaborating in a variety of chamber music ensembles.

Visit them at:  
<https://www.uidaho.edu/class/music/faculty>  
<https://music.wsu.edu/faculty-and-staff/>  
<https://music.nsa.edu/personnel/cole-tutino/>



### CAVATINA DUO | November 7, 2023

Eugenia Moliner, *flute* (Spain)  
Denis Azabagic, *guitar* (Bosnia)

"Style, sympathy, and technical aplomb... it's doubtful that the Cavatina's sophisticated and artistic playing could be surpassed." — Fanfare

Visit them at:  
[www.cavatina duo.com](http://www.cavatina duo.com)  
[www.azabagic.com](http://www.azabagic.com)  
[www.eugeniamoliner.com](http://www.eugeniamoliner.com)



### JUPITER STRING QUARTET | January 25, 2024

Nelson Lee, *violin* | Meg Freivogel, *violin*  
Liz Freivogel, *viola* | Daniel McDonough, *cello*

"An ensemble of eloquent intensity... one of the mainstays of the American chamber-music scene." — The New Yorker

Visit them at:  
[www.jupiterquartet.com](http://www.jupiterquartet.com)



### LYSANDER PIANO TRIO | April 9, 2024

Itamar Zorman, *violin* | Liza Stepanova, *piano* | Michael Katz, *cello*

"...incredible ensemble, passionate playing, articulate and imaginative ideas and wide palette of colours. Performed with sensitivity, panache and emotional depth, it perfectly displayed the Lysander Trio's enormous potential." — The Strad

Visit them at:  
[www.lysandertrio.com](http://www.lysandertrio.com)

All concerts begin at 7:30 pm in the U of I Administration Auditorium

For tickets & more information:

call 208-885-7557 | visit: [www.uidaho.edu/class/acms](http://www.uidaho.edu/class/acms)



Thank you to our donors and patrons for their continued support.







The Kennedy Center American College Theater Festival, part of the Rubenstein Arts Access Program, is generously funded by David M. Rubenstein.

Special thanks to The Harold and Mimi Steinberg Charitable Trust for supporting the John F. Kennedy Center for the Performing Arts' Kennedy Center American College Theater

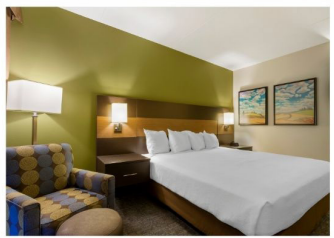
Festival. Additional support is provided by The Honorable Stuart Bernstein and Wilma E. Bernstein; and the Dr. Gerald and Paula McNichols Foundation. Kennedy Center education and related artistic programming is made possible through the generosity of the National Committee for the Performing Arts.

This production is entered in the Kennedy Center American College Theater Festival (KCACTF). The aims of this national theater education program are to identify and promote quality in college-level theater production. To this end, each production entered is eligible for a response by a regional KCACTF representative, and selected students and faculty are invited to participate in KCACTF programs involving scholarships, internships, grants and awards for actors, directors, dramaturgs, playwrights, designers, stage managers and critics at both the regional and national levels.

Productions entered on the Participating level are eligible for invitation to the KCACTF regional festival and may also be considered for national awards recognizing outstanding achievement in production, design, direction and performance.

Last year more than 1,500 productions were entered in the KCACTF involving more than 200,000 students nationwide. By entering this production, our theater department is sharing in the KCACTF goals to recognize, reward, and celebrate the exemplary work produced in college and university theaters across the nation.

BEST WESTERN PLUS UNIVERSITY INN | HOTEL AND CONFERENCE CENTER



Best Western PLUS

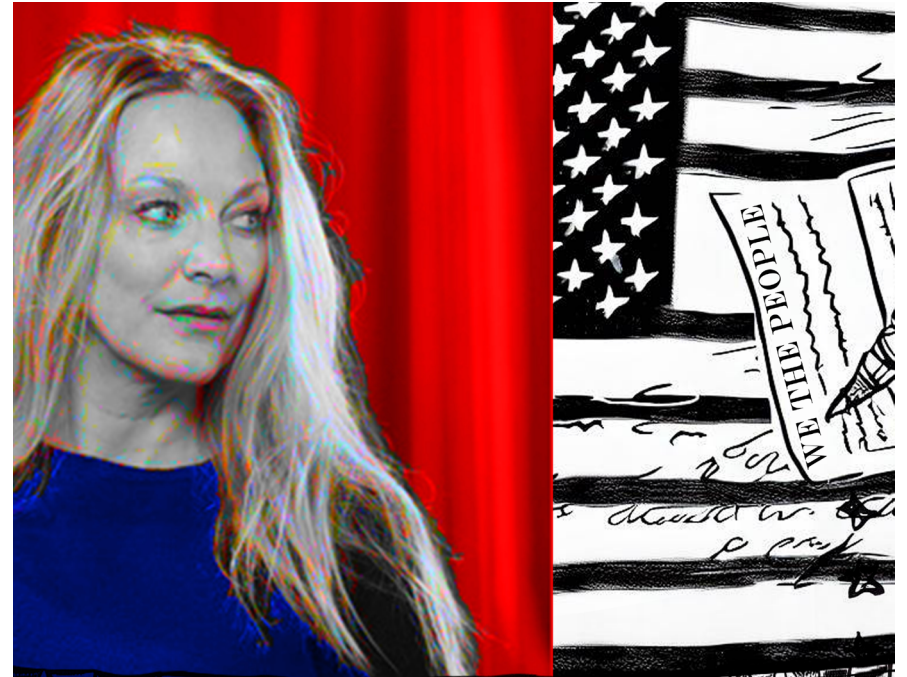


- COMPLIMENTARY HOT BREAKFAST
- ON SITE RESTAURANT AND BAR
- INDOOR POOL, SOAKING TUB, AND SAUNA
- IN ROOM MICROWAVE AND REFRIGERATOR
- OUTDOOR COURTYARD AND GAMES
- ON SITE LAUNDRY FACILITIES
- FITNESS CENTER

208.882.0550

WWW.UINN MOSCOW.COM

Coming Next



WHAT THE CONSTITUTION MEANS TO ME

BY HEIDI SCHRECK  
DIRECTED BY DAVID LEE-PAINTER  
STARRING KELLY QUINNETT

NOV. 30 | 7:30 PM PREVIEW | \$10

DEC. 1 & 2 AT 7:30 PM

DEC. 3 AT 2 PM

FORGE THEATER

404 SWEET AVE. MOSCOW



IDAHO  
REPERTORY  
THEATRE

CONTENT DISCLOSURE:  
MATURE MATERIAL



FREE FOR U OF I STUDENTS  
TICKETS: WWW.UITICKETS.COM

# Amélie (The Musical)

## Cast

Amélie .....	MONICA EVANS & ELISE VON BARGEN
Nino.....	TY HARRINGTON+ & JACOB MCGAUGHEY
Amandine.....	KELLY ZAKARIASEN
Blind Beggar/Philomene/Sylvie.....	KARI WILSEY
Raphael/Bretodeau.....	DENNIS MCGREEVY*
Hippolito/Mysterious Man.....	MAYSEN BEALL
Elton John.....	CHRISTIAN REED+
Dufayel/Collignon.....	ROM KIM
Joseph/The Goldfish.....	CONNOR HEIM
Lucien/Garden Gnome.....	JACOB BROCK
Georgette.....	SAMI BURTON
Suzanne.....	KTTURNER+
Gina.....	MCKINLEY KIRK
Good-Looking Lug/Tourist.....	RYLAN LOVE

## Orchestra Personnel

Conductor .....	VERN SIELERT~
Piano.....	CHRISTIAN REED+
Synthesizer.....	ALEXANDRO AGUILAR, ISABEL MARTIN
Accordion .....	MASON OYLER
Guitar.....	EVAN LINDEMOOD
Bass.....	JAKE GENDREAU
Percussion.....	NATHAN LANNIGAN
Flute.....	ADRIANA VARN
Clarinet.....	MALLORY HUNT
Trombone.....	JAKEY CAMPBELL

## Artistic Team

Director.....	CRAIG A. MILLER~
Orchestra Director/Conductor.....	VERN SIELERT~
Music Director.....	CHRISTIAN REED+
Scenic Designer.....	LOU PEROTTA*
Costume Designer.....	VALERIE DEMEERLEER
Lighting Designer.....	ALANA SHEPHERD~
Sound Operator/Designer.....	RYAN FRALEY
Sound Engineer.....	DAVID HARLAN~+
Projection Designer.....	CHRIS SCHLOEMP*
Prop Supervisor.....	DAISY ERSKINE
Choreographer.....	JILLAN NAYLOR
Technical Director.....	MICHAEL BRANDT~+
Stage Manager.....	KATIE PRY*
Assistant Director/Dramaturg.....	BLAKE WATSON*
Intimacy Choreographer.....	KELLY QUINNETT~
Dialect Coach.....	TAYLOR TELFORD+
Assistant Scenic Designer.....	ANDY ZIEGLER

continued on next page

## BIOS (continued)

**KELLY ZAKARIASEN** (Amandine Poulain) is a native of Rochester, Minnesota and wears many hats as the director of business development at Fireline Medics and as mother of nine children. When she wasn't chasing children, animals, or employees she found time to play Maud Dunlop in "The Music Man" (Troy Community Theatre), Rachel Wardle in "Pickwick Papers" (APOD Productions), Widow Corney in "Oliver!" (APOD Productions), and most recently Madame in Troy Community Theatre's production of Rogers and Hammerstein's "Cinderella." She is delighted to be a small part of the meaningful and heartfelt story of "Amélie", but is most grateful to learn from and grow with this wildly talented cast, crew, and direction team.

**ALEXANDRA ZIEGLER** (Assistant Scenic Designer) is ecstatic to be the assistant scenic designer and a senior in the BFA theater performance program at U of I. Previous designs Alexandra assisted with on the Hartung stage were "Mr. Burns: A Post-Electric Play" (scenic) and "Macbeth: Alba Gu Brath" (costume). The latest U of I stage performance Alexandra was a part of was "Into the Woods" as Snow White and "Macbeth: Alba Gu Brath" as Lady Macduff and Banquo's understudy.

## Department of Theatre Arts COMING NEXT

Best New American Play- Obie Awards | Best New Play - New York Drama Critics Circle

### WHAT THE CONSTITUTION MEANS TO ME (an IRT Off-Season show)

*A brilliantly crafted show, harrowing and funny and humane.*

*Directed by David Lee-Painter | Starring Kelly Quinnett*

Preview: November 30 | \$10 only!

December 1, 2 at 7:30 pm

December 2, 3 at 2:00pm

Forge Theater | Tickets on sale now at [uitickets.com](http://uitickets.com)

ALL SHOWS  
**FREE**  
FOR U OF I  
STUDENTS

### SPRING FIRST BITE

New Play Series on Zoom

March 1, 2, 3

### GO, DOG. GO! (The Musical)

*A big and little musical world Like a pop-up book that comes to life. For the whole family!*

Preview: February 1 at 7:00 pm | \$10 only!

February 2, 3, 9, 10 at 7:00pm

February 4, 11 at 2:00 pm

Hartung Theater

### ORLANDO

*An inventive, creative journey through centuries and genders.*

Preview: April 25 at 7:30 pm | \$10 only

April 26, 27, May 3, 4 at 7:30 pm

April 28, May 5 at 2:00 pm

Hartung Theater

INFO: [WWW.UITHEATRE.COM](http://WWW.UITHEATRE.COM)



## BIOS (continued)

**CHRIS SCHLOEMP** (Projection Designer) has been an actor and projections designer in the Sonoma County, California theatre community for the last thirty years. When he isn't treading the boards himself, Chris is the Theatre Program Director at Montgomery High School in Santa Rosa, California, where he is thrilled to be directing "The Cherry Orchard this Fall." Ever the student himself, Chris is also in his third and final year of the distance MFA in theatre arts program at U of I. His projections design for last year's production of "Cabaret" marked his first work in the Hartung Theatre, and he is beyond excited to be given the opportunity to return to campus again for this amazing musical.

**VERN SIELERT** (Orchestra Director/Conductor) is professor of trumpet and director of jazz studies at tU of I. He also serves as the artistic advisor for the Lionel Hampton Jazz Festival. From 2001-2006 he was director of jazz ensembles at the University of Washington, and he has also served on the faculties of Baylor University, Illinois State University and Millikin University. Sielert has also directed jazz ensembles at Normal Community West High School in Normal, Illinois. He holds BM degrees in jazz studies and music education, and a MM degree in jazz studies from the University of North Texas, and a DMA in trumpet performance from the University of Illinois.

**KT TURNER** (Suzanne) is a second year doctoral fellow in the Department of History at U of I. She received her MFA in directing, pedagogy, and history from the U of I Department of Theatre Arts in May 2022. Recent credits include: "Macbeth: Alba gu Brath" (Director & Co-Adaptor; Fall 2021), "Everybody" (Director; Spring 2021), "& Juliet" (Annie Rice; May 2021), and "The Revolutionists" (Marianne Angelle; Fall 2020). Avec cette production, elle rend hommage à ses professeurs de français: Mme Christiansen, M. Lenoux, Mme Armstrong, et Mme Moutou.

**ELISE VON BARGEN** (Amélie) is a second-year student at U of I and a member of Pi Beta Phi studying theatre arts with an emphasis in performance. This is her third show with the department previously playing Helga in "Cabaret" and Soul in "Vigils." Other roles include Edwin Drood in "The Mystery of Edwin Drood," and Wednesday Addams in "The Adams Family." Elise is excited to have been casted as Amélie alongside Monica and has loved the experience and all she has learned on the process. She would also like to thank her mom and dad, brothers and sister and all her other sisters for all their constant love and support.

**KARI WILSEY** (Blind Beggar/Philomene/Sylvie) is a senior at U of I, is pursuing their BFA in theatre performance. Some of Kari's recent U of I performances include Edna in "Mr. Burns: A Post-Electric Play" and Louison in "The Imaginary Invalid." At Lewis and Clark State College they received an Irene-Ryan Nomination for KCACTF for her role as Onl Prior in "Glassheart." Theatre arts have always played a major role in their life as an artist and they thank their mother, Janelle, for always telling her to follow her heart in everything she does, especially her work as an artist.

*continued on next page*



*A very special thanks to Alison Steven and Gayle Worthington from The Idaho Commission for the Blind and Visually Impaired for their kindness, consultation, and coaching in our desire to be thoughtful, respectful, and authentic in the portrayal of a blind character by a sighted actor in this production.*

*For more information on The Idaho Commission for the Blind and Visually Impaired, please visit them at [www.icbvi.idaho.gov](http://www.icbvi.idaho.gov)*

## Artistic Team (continued)

Assistant Costume Designer.....JORDAN ADKINS  
Assistant Lighting Designer.....LUKE OWEN  
Assistant Props Supervisor.....KALISTA MCCAFFERTY  
Assistant Stage Manager.....SAVANNAH WATSON  
Assistant Stage Manager.....ELIZABETH BOURASSA  
Assistant Stage Manager.....LOLA CHAVEZ  
Assistant Stage Manager.....MACY KORSTEN  
Assistant Technical Director.....KEVIN BAKER  
Intimacy Captain.....KYLIE MORRIS  
Costume Design Advisor.....JEANNIE GALIOTO~  
Costume Director .....GINGER SORENSEN~

\*Work on "Amélie (The Musical)" helps fulfill degree requirements for MFA candidates.  
~ University of Idaho Faculty  
+ Alumni

### Carpenters

LOLA CHAVEZ, RIVER EBENROTH, RYAN FRALEY, RUSSELL GARLINGHOUSE,  
ALLEN HADLEY, MACY KORSTEN, LUKE MESSERLY, LUKE OWEN,  
JENA REAVES, PIPER RICKMAN, HAILEY ROGERS, THRESSA SCHNEIDER,  
SYDNEY TEPLY, REBA DECKER, RENEE ANNUNZIATO, JACOB MCGAUGHEY,  
ERIN HESTER, KARI WILSEY, KEVIN BAKER, HARRY BLACKSTONE,  
KATHRYN REECE

### Lead Carpenters

LOU PEROTTA, KATIE PRY

### Lead Electricians

RAVEN BOUVIER, STEPHANIE ATWOOD

### Wardrobe

ANNA BOWDEN, RICH CRAWFORD, AURORA DICKEY,  
MOON HAMMARI, BROOKLYN KING, RYAN LOVE AND JANA VELEVA

### Draper

JANTZEN BATES

### Firsthand

CAMERON NIELSEN

### Stitchers

RENEE ANNUNZIATO, AMARI CABALLERO, RUSSELL GARLINGHOUSE,  
CONNOR HEIM, MADDIE NORDTVEDT, SAMANTHA SHAFFER,  
AMELIA SHRIVER, ANGELA THERRIEN, KARI WILSEY  
AND THEATRE 104 STUDENTS

## Cast & Artistic Team Bios (in alpha order)

**MAYSÉN BEALL** (Hippolito/Mysterious Man) is a freshman in the BFA program majoring in theatre arts. Maysén is from Fruitland and loves anything that is musical theatre related. He has been a part of many shows including "The Lighting Thief" (Grover), "Frozen" (Oaken), and "All Shook Up" (Jim). Throughout all the shows he has done, he has found a passion for being on stage and performing, it's where he feels most comfortable and himself. He wants to thank everyone who has supported him through his journey and hopes you fall in love with the story of "Amélie" like he did!

**JACOB BROCK** (Lucien/Garden Gnome) is a performer from Idaho Falls and is thrilled to be making his UI debut. He has worked with Music Theatre West and the Utah Festival Opera in Logan, UT. Some of his favorite roles have included Mortimer (and Teddy) in "Arsenic and Old Lace," Archibald Craven in "The Secret Garden," and puppeteering Audrey II in "Little Shop of Horrors."

*continued on next page*



## BIOS (continued)

**SAMI BURTON** (Georgette) is so excited to perform in “Amélie” for her first show at U of I. Sami has been involved in theatre for eight years and is furthering her education in theatre and dance. Favorite shows she has been involved in are “The Addams Family,” “Cabaret: and “The Prom.” She thanks her parents and theatre advisors for supporting her along the way.

**VALERIE DEMEERLEER** (Costume Designer) is a senior at U of I, receiving their BFA in theater arts with a focus in costume design. Valerie has been an assistant designer for Elton John’s “Aida,” “Our Town,” “Imaginary Invalid” and Oscar Wilde’s “Gross Indecency” as well as hair and make-up designer and wardrobe head. Valerie grew up in Spokane, WA, but takes inspiration from the numerous places they’ve lived, including the colorful fashion of one of their favorite cities, Brighton, England. She has loved being a part of this amazing team.

**MONICA EVANS** (Amélie) is thrilled to make her U of I debut in this dream role! Her previous credits include Lewiston Civic Theatre’s “Grease” (Sandy), “Elf the Musical” (Jovie), and “Cinderella” (Cinderella); and Regional Theatre of the Palouse’s “Guys & Dolls” (Adelaide), “Company” (Jenny), and “She Loves Me” (Ilona Ritter). Many thanks to her husband, Stuart, and voice teacher, Christian Reed. Monica dedicates her performance to Janine, the world’s best mama.

**RYAN FRALEY** (Sound Operator and Designer) (He/Him/They/Them), is from the small town of Nampa. He is pursuing two majors: theatre arts and secondary education. Previous theatre experience includes “The Diary of Anne Frank,” performing in “Rumors,” “The Odd Couple,” “The Trial of Goldilocks” and “The Outsiders” and stage managing “For Her Childs Sake or Her First False Step.”

**TY HARRINGTON** (Nino) is a recent BFA graduate of theatre arts. Ty is ecstatic to make his return to the Fagerbakke Stage and work with this incredible cast and creative team. Career highlights include Lloyd in “Noises Off,” Gibson/Burns in “Mr. Burns a Post Electric Play” and Beralde in “The Imaginary Invalid.”

**CONNOR HEIM** (Joseph/The Goldfish) is a transfer student from North Idaho College. He has appeared in U of I productions of “Measure by Measure” and “The Imaginary Invalid.” Other notable roles include Lysander in “A Midsummer Night’s Dream” and Gary in “This Random World.”

**ROM KIM** (Dufayel/Collignon/Collignon’s father) is over the moon to join the U of I theatre’s production of “Amélie.” Some of his past credits include: Mugsy in “Give My Regards to Broadway” (Starlight Theatre Company), Charles in “The Mayor of Baltimore” (Little Theatre), and Provost/Froth in “Measure for Measure” (2Boards Productions). He wishes to thank everyone in the cast and crew for their incredible dedication and hard work.

**MCKINLEY KIRK** (Gina) is a junior from Boise. She is double majoring in theatre and Spanish and is a BFA candidate with an emphasis on performance. McKinley has appeared in U of I’s productions of “Macbeth,” “A Christmas Carol” and “Measure for Measure.”

**RYLAN LOVE** (Good Looking Lug/Tourist) is a first year student with a double major in theatre and secondary education. He is from Homedale, Idaho, and has loved theatre since he was nine-years old. Before coming to U of I, Ryan was involved in children’s, community and high school theatre where he acted, wrote, choreographed and directed.

**KALISTA MCCAFFERTY** (Assistant Props Supervisor) was born and raised in Pullman, Washington, and loves living on the Palouse. She is currently a junior at U of I, studying theatre design, technology, and management, and English with minors in creative writing and woman, gender and sexuality studies. Involved in theatre for 13 years, she’s worked in nearly all areas of production. Over the summer she did sound design for “The Wizard of Oz” at Pullman Civic Theatre and was an intern for Idaho Reparatory Theatre’s children’s camp. After graduation she plans to pursue her dream of being a playwright and lighting designer.

*continued on next page*

## BIOS (continued)

**JACOB MATTHEW MCGAUGHEY** (Nino) is a second-year student at the U of I and from Coeur d’Alene. Jacob is so excited to be part of the Amélie team! His most recent theatre work includes Pompey in U of I’s “Measure for Measure,” Ensemble in Spokane Valley Summer Theatre’s “Bright Star” and Performer in SVST’s “Rising Stars.” Jacob thanks the cast and creative team for their hard work and his friends and family for their never-ending support!

**DENNIS MCGREEVY** (Raphael Poulain/Bretodeau) was born and raised on the Palouse and credits his mom, who brought him to many shows on this very stage, for his love of theatre. Dennis graduated from WSU with a degree in English in 1989. He lived in New York City for 13 years and St. Paul, MN for six years before returning to the Palouse in 2009 to work for Schweitzer Engineering Laboratories as an employee and leader development professional where he still works. In the spring of 2022, Dennis enrolled in the U of I’s MFA in theatre program with an emphasis on acting. This is Dennis’ third main stage production since joining the program. Previous roles include: Lucio in “Measure for Measure” and Herr Schultz in “Cabaret.” Earlier this year, Dennis reprised the role of Fabian in the, now, award winning “The Wife of Fabian Vitalik.” While Dennis is still relatively new to the U of I, he has appeared in numerous productions at the Regional Theatre of the Palouse in Pullman: Curtis Jackson in “Sister Act,” Jud Fry in “Oklahoma!” Jean Valjean in “Les Miserables,” Max Detweiler in “Sound of Music,” Archibald Craven in “The Secret Garden,” and Bob Wallace in “White Christmas” to name a few. Dennis thanks his wife, his children, and his many families (immediate, extended, community, spiritual, work, and, of course, theatre!) for their encouragement, support, and love. Lastly, thank you for coming to this show and for keeping theatre alive and well in our community.

**CRAIG A. MILLER** (Director) joined the University of Idaho, Department of Theatre Arts in 2018, where he is currently head of directing and an assistant professor of acting and directing. He has a Bachelor of Science in acting & performance from the Illinois State University School of Theatre (1997), and a Master of Fine Arts in directing from the University of South Carolina (2004). For the U of I, Miller has acted in “The Open Hand” (2018) written and directed by department Chair, Robert Caisley and played Argan, the hypochondriac in “The Imaginary Invalid” (2023.) Craig has directed U of I productions of Noël Coward’s “Present Laughter” (2019), “A Christmas Carol” (2020 & 2021) and the musical “Cabaret” (2022.) In summer 2023, Miller starred in the IRT production “Constellations” with Kelly Quinnett and in 2022, Miller performed in “Every Brilliant Thing” for IRT, for which he was also an Elaine Ambrose Storytelling Fellowship recipient and the keynote presenter for U of I’s National Suicide Prevention Day. Craig is the former Artistic Director of 6th Street Playhouse in Santa Rose, CA, and a proud member of the Society of Directors and Choreographers, the national labor union representing professional directors in the United States. He sends his love to his biggest fans: Meghan, Eliza and Clayton.

**CHRISTIAN REED** (Elton John & Music Director) is a local voice teacher, musical theatre specialist, and U of I Alumni with a master’s in music. Though classically trained, Christian’s passion has always been for musical theatre. You may have seen his work in the U of I’s productions of “Into the Woods,” “Cabaret” or “Pirates of Penzance.”

*continued on next page*

# LOVE THE SHOW?

Please tell your friends! Word of mouth is our best advertising.  
Share our posts on social media! Follow us on Facebook at  
[facebook.com/uitheatre](https://www.facebook.com/uitheatre)