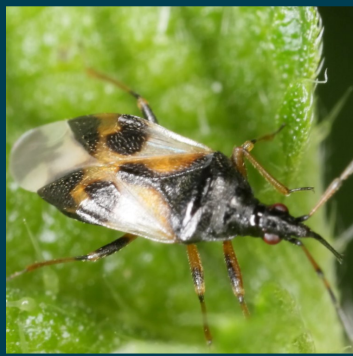


University of Idaho, Bonneville County Extension

Eastern Idaho PEST ALERT

Bannock, Bingham, Bonneville, Cassia, Fremont, Jefferson, and Madison Counties

Aug 13, 2021



GOOD



BAD



**PICTURE
of the week**



UPCOMING

UPCOMING:

Bud Grafting Lab

Saturday August 14, 2021 10 am

At the Fair Grounds: 1542 E 73rd S

Come at 10 to learn all about bud grafting! Sign up to graft your own tree after for only \$5.

You **MUST** register beforehand to graft a tree as we have a limited supply of rootstock. Use this link: [Registration Link](#)

You can also bring back a grafted tree from May if it **DID NOT TAKE** and we will try to graft it again.

Bring a sharp grafting knife if you have one!



Fire Blight:



Continue to prune out any wood with fire blight symptoms. Disinfect the pruners between each cut with 10% bleach solution, rubbing alcohol, or disinfectant wipes. If the symptoms extend beyond the fruiting spur you should cut at least twelve inches into healthy wood. The bacteria spreads through the vascular tissue and will be beyond the visible symptoms.



Good Insect:

Minute Pirate Bug

Ron Patterson, Horticulture/Agriculture Educator
University of Idaho Extension, Bonneville County

Arrrgh! The minute (meaning very small) pirate bug is a tiny true bug that can be overlooked. But it is very helpful in the yard and garden. It is one of the first predatory insects to show up in the spring. It will feed on plants until soft-bodied insects and spider mites show up, then will



turn if feeding to those pest insects. Any plant damage caused by minute pirate bugs is insignificant. Like most other beneficial insects and spiders, minute pirate bug is severely damaged by broad spectrum insecticides such as malathion and carbaryl. The presence of minute pirate bugs can help keep pests, especially spider mites, at low populations. They will, on occasion, bite people, and some people may have a strong reaction, but for the most part these can be considered a very beneficial insect.

Here is some more information on minute pirate bugs:

https://digitalcommons.usu.edu/cgi/viewcontent.cgi?article=2816&context=extension_curall

<https://entomology.wsu.edu/outreach/bug-info/minute-pirate-bug/>

Bad Insect:

Pear slug

Ron Patterson, Horticulture/Agriculture Educator
University of Idaho Extension, Bonneville County



Courtesy of Lesley Ingram, Bugwood.org

The pear sawfly is from Europe. The larval form is called apear slug. It looks like a slug and feeds on the top of leaves. The damage can be severe, but not usually. In ornamental plantings it can be quite unsightly. The preferred hosts are pears and cherries, but it will also feed on plum, quince and apple. I have even seen a fairly heavy population on peking cotoneasters. They feed on the upper surface of the leaf down to the lower epidermis, leaving

irregular, brown membranous spots. Here are some links to information about how to identify and control pear slugs:

<https://extension.colostate.edu/topic-areas/insects/pear-slugs-5-560/>

<http://pnwhandbooks.dev.extension.oregonstate.edu/insect/tree-fruit/pear/pear-pear-sawfly-pear-slug>

Codling Moth:

As we get into the second and third generation, continue your codling moth coverage as indicated for your nearest weather station.

Continue to keep fruit protected through September 15, or until days to harvest interval is indicated on your label so pesticide residue is below the threshold level. After September 15 codling moth becomes inactive.



Second Generation Spray Timing Table

Location	Apply First Spray	Greatest Period of 2 nd Generation Egg Hatch	End of 2 nd Generation
Burley	July 9	July 20 – Aug 4	Aug 18
Pocatello East Side	July 4	July 13 – July 24	Aug 6
Pocatello Airport	July 13	July 24 – Aug 5	Aug 25
Fort Hall	July 13	July 25 – Aug 6	Aug 27
Blackfoot	July 18	July 30 – Aug 13	Sept 5
Idaho Falls Airport	July 22	Aug 4 – Aug 18	Sept 15
Idaho Falls/Shelley	July 19	July 31 – Aug 14	Sept 11
Ucon	July 19	Jul 30 – Aug 15	Sept 11
Rigby	July 23	Aug 8 – Aug 20	Sept 15
Ririe	July 24	Aug 9 – Aug 26	Sept 15
Rexburg	July 22	Aug 3 – Aug 17	Sept 15
Sugar City	July 30	Aug 11 – Sept 1	Sept 15
St Anthony	Aug 2	Aug 16 – Sept 8	Sept 15



Third Generation Spray Timing Table

Location	Apply First Spray (if not already covered)	End of 3 rd Generation
Burley	Aug 19	Sept 15
Pocatello East Side	Aug 7	Sept 15
Pocatello Airport	Aug 26	Sept 15
Fort Hall	Aug 28	Sept 15
Blackfoot	Sept 6	Sept 15
Idaho Falls Airport	unknown	unknown
Idaho Falls/Shelley	Sept 12	Sept 15
Ucon	Sept 13	Sept 15

Chemical control for Codling Moth:

Ingredient	Efficacy	Residual length (days)	Mode of Action (MOA) and Comments
Conventional			
Carbaryl (old Sevin products)	Good	14	MOA 1
Gamma-cyhalothrin (Spectracide Triazicide)	Good to Excellent	14 – 17	MOA 3. Last application at least 21 days prior to harvest
Malathion (Bonide Malathion, Hi Yield Malathion)	Good	5 – 7	MOA 1. Max 2 applications; some products are pears only
Zeta cypermethrin (Garden Tech Sevin)	Good to Excellent	14 – 17	MOA 3. Last application at least 14 days prior to harvest
Organic			
Azadirachtin (Safer BioNeem)	Fair to Good	7 – 10	MOA not classification
Codling moth virus (Cyd-X)	Good (if populations low)	7	MOA no classification. Works best when used at beginning of generation
Kaolin clay (Surround)	Fair	7	MOA no classification. Produces protective barrier
Oil (All Seasons Oil, EcoSmart, Neem)	Fair	3	MOA no classification. Recommended for the first application of the generation only
Pyrethrin (Ortho Fruit Spray, Fertilome Fruit Tree Spray, Safer End All)	Good	3 – 5	MOA 3
Spinosad (Monterey/ Fertilome Spinosad)	Good	7 – 10	MOA 5. Max 6 applications

Photo of the Week:





We had one of these little guys sneak into one of our office this week and it raised a few questions! First of all, this is a Jerusalem Cricket, not actually a cricket or from Jerusalem... but that's beside the point! Secondly, they are usually harmless, though if pestered too much, they will bite. They can make a song, like crickets, and they are partial to potatoes– no wonder they are found in Idaho! For more information:

[Colorado State Fact Sheet: Jerusalem Cricket \(PDF\)](#)

I University of Idaho
Extension
Bonneville County

1542 E 73rd S
Idaho Falls, ID 83401
(208)529-1390
Bonneville@uidaho.edu

	Facebook.com/ UIExtensionBonneville
	https://www.instagram.com/ bonnevilleidaho/
	@CountyExtension