



**EASTERN IDAHO**

# PEST ALERT

BANNOCK, BINGHAM, BONNEVILLE, CASSIA, FREMONT, JEFFERSON, AND MADISON COUNTIES

## INSIDE THE ISSUE



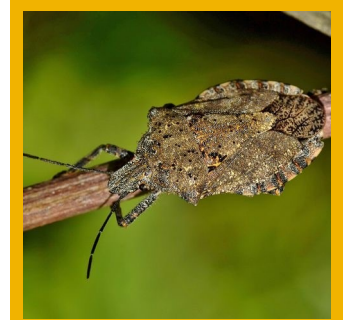
**GOOD**

PG 2



**BAD**

PG 2



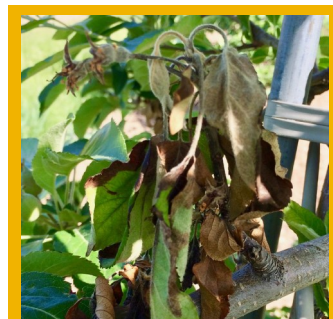
**PHOTO OF THE WEEK**

PG 4



**CODLING MOTH**

PG 3



**FIREBLIGHT**

PG 3

# Voles

By Ron Patterson, Extension Educator

Voles are an annual concern, but we don't see evidence of them until spring. Right now they are living underground most of the time and there aren't any good control activities we can do. There are a few things we can do before and during snowfall that should help reduce the winter damage they do.

Voles do not like to cross open ground. So, if you can keep a path shoveled free of snow, they will not want to cross that area.

Here is a good publication from University of Nebraska Extension to give you some ideas if you have a vole problem.

<https://wildlife.unl.edu/pdfs/controlling-vole-damage.pdf>



# Fall Irrigation

By Ron Patterson, Extension Educator

## Trees and shrubs

It's not uncommon for calls to come into the office in the spring about spruce and pine trees that have brown tips on the needles. Sometimes these calls will come in the middle of the winter. This dieback of needles and even entire branches is called winter burn. Proper irrigation in the fall will help your trees make it through the winter months.

Here is an excellent article from University of Wisconsin Extension on winter burn of evergreens.

<https://hort.extension.wisc.edu/articles/winter-burn/>



## Lawns

Lawn irrigation is another critical fall practice that can help your lawn make it through the winter in good shape. As the fall season progresses grass growth will slow, and temperatures drop. These conditions reduce the evapotranspiration of our lawns but does not eliminate the need for proper irrigation.

Continue to irrigate for the lawn root zone—0.75 - 1" for most soils in our area. Now is the time to increase the days between irrigations. I am at 9 days between irrigations on my lawn. The final irrigation should be just after your final fertilization (half rate) and just before you winterize your sprinkler system.

Having the right amount of water in the soil just before winter will reduce some of your winter lawn survival concerns.



## Codling moth

Check back next year for information on codling moth tracking and control!



## Fire Blight

At this point, prune out any new fire blight strikes as they happen. Don't wait until fall or wintertime.

Remember to disinfect your tools between each cut.

## EASTERN IDAHO

# PEST ALERT

## UPCOMING EVENTS

**SEPTEMBER 27** IDAHO HOME GARDEN TIPS

FALL LAWN CARE

**\*\*IF YOU MISSED OUT, CONTACT US FOR THE RECORDING!!!**

**7:30 PM** PLANT TALK

**OCTOBER 11** IDAHO HOME GARDEN TIPS

DIVIDING PERENNIALS

**OCTOBER 25** IDAHO HOME GARDEN TIPS

WINTER PROTECTIONS OF ROSES,  
GRAPES, CANE BERRIES ETC.

BRACKEN HENDERSON, EXTENSION  
EDUCATOR

**7:30 PM** PLANT TALK

**NOVEMBER** MASTER GARDENER  
REGISTRATION BEGINS

EMAIL [LENA.LALLEN@UIDAHO.EDU](mailto:LENA.LALLEN@UIDAHO.EDU) FOR  
MORE INFORMATION



## PHOTO OF THE WEEK:

I just returned from Western Idaho and Oregon and these little stink bugs were EVERYWHERE!! This is a species we are currently on the lookout for in Eastern Idaho, so if you see one, take some pictures and let your local extension office know! They are damaging to many crops and we want to make sure they are controlled properly.

UNIVERSITY OF IDAHO  
EXTENSION, BONNEVILLE COUNTY

1542 E 73rd S

Idaho Falls, ID 83402

Phone: (208)529-1390

Fax: 208-888-8888

Email: [Bonneville@uidaho.edu](mailto:Bonneville@uidaho.edu)

Web: [uidaho.edu/extension/county/bonneville](http://uidaho.edu/extension/county/bonneville)



Facebook.com/  
UIExtensionBonneville



[https://www.instagram.com/  
bonnevilleidaho/](https://www.instagram.com/bonnevilleidaho/)



@CountyExtension