

Dining in Lincoln County

- **Shoshone**
 - Snack Bar
415 S. Greenwood, 886-2294
 - Manhattan Café
133 S. Rail St. W. 886-2142
 - Mountain View Lanes
608 N. Greenwood, 886-2020
 - Valley Country Store C-Store
103 N. Greenwood, 886-7557
- **Dietrich**
 - Eagles Nest
19 N. Main, 544-2094
- **Richfield**
 - Main Street Bar & Grill
155 N. Main St. 487-2003

For Lincoln County
Recreation & Pool Activities call the
Lincoln County Recreation Dist..
(208) 886-9910 or
www.lincolncountyrec.weebly.com

Attractions in Lincoln County

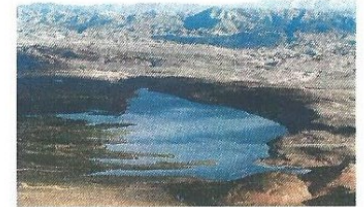


- Mammoth Caves - 8 miles North of Shoshone
Open April - October 9am - 6pm, 886-7072
- Shoshone Ice Caves
1561 N. Hwy 75, Open May 1 - Sept. 30
886-2058
- Lincoln County Historical Museum
112 West B, Shoshone, Open June - Oct.
- Start of the Sawtooth Scenic By-way
- Historic Buildings
- Train Viewing
- Photo Opportunities
- Little Wood River
- Mary Gooding Park
- Antique and Retail Stores



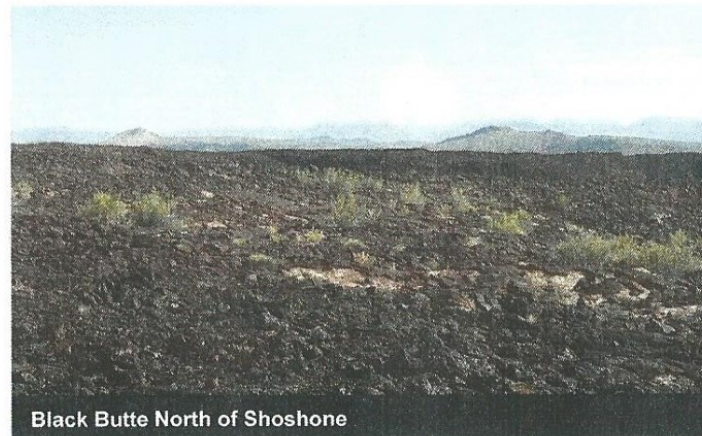
Outdoor Recreation in Lincoln County

- Pheasant Hunting
- Wild Boar Hunts
- Hunting for Deer, Elk and Antelope
- Magic Reservoir - Fishing and Boating.
- Hiking,
- Mountain Biking,
- Dirt Biking,
- ATV
Opportunities
- Horse Back
Riding



For More Information on Hunting & Fishing Contact the Idaho Fish & Game - 324 S. 417 E #1 / 324-4359

For More Information on Hiking and other Outdoor Activities in Lincoln County Contact the
Shoshone BLM Field Office - 400 West F St. Shoshone / 732-7200



Black Butte North of Shoshone

Lincoln County Chamber of Commerce
102 South Rail Street East
Shoshone, Idaho 83352
(208) 886-9811
LincolnCoChamber@gmail.com
www.lincolncountychamber.org

Visitor Center Open 7 Days a week
10:00 am to 5:30 pm

Annual Events in Lincoln County



St. Patrick Day Parade - March - Shoshone

History Days - Memorial Day Weekend - Shoshone - Museum and Courthouse Lawn

Richfield Outlaw Day - 2nd Saturday in June

Shoshone Arts in the Park - 2nd Weekend in July

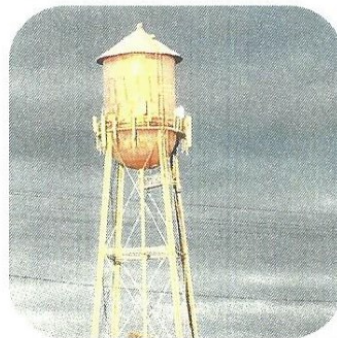
Lincoln County Fair and Rodeo - Last Full week in July

Lost N Lava Trail Ride - 2nd Weekend in September

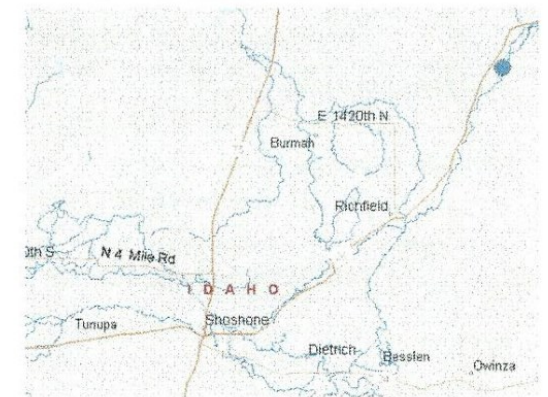
Lost N Lava Cowboy Gathering 3rd Weekend in September

Lodging in Lincoln County

- The Mansion -
315 South Greenwood, Shoshone, 886-2858
- CA Bull Elk Ranch
1094 East 1520 North, Richfield, 404-9632
- RV Parking
Shoshone RV and Trailer Park
Hwy 93 & Hwy 24 - 420-7015/886-2142
Lincoln County Fairgrounds
South Carmen - 539-4500
West Magic Resort
960 West Magic Rd #16 - 487-2571



LINCOLN COUNTY TOURISM BROCHURE



BROCHURE PRODUCED BY THE



Dietrich - Richfield - Shoshone